



Volume 27, Issue 4

Summer/Fall 2008

Special points of interest:

- Be sure and attend our joint mixer! It is sure to be a good time!
- Volunteer four hours at our booth and receive a free t-shirt!
- Joint Soils tour of WI/IL- Application Deadline is September 15th!
- News? Updates? Pictures for the next newsletter? Send them to jamiejp@nwmissouri.edu

Inside this issue:

Tri-Society Mtg Announcements	2
S-5 Mtg Announcements/NEW Soils Gals	3, 4
A Note from the Chair	5
Thoughts on the Smithsonian Exhibit	6-9
Hodge Podge	10
Joint Field Trip Info	11-13
2009 National Collegiate Soil Judging	14
Birth of a Gully	15
Membership Form	16

**Mark your calendars!**  
**AWSS-Association of Women Geoscientists Joint Social**  
 Tuesday, October 7th  
 6:30 pm-8:30 pm  
 Hilton Americas Hotel, Room 327  
 Join us for food, fellowship, and fun!



AWSS members are invited to:  
**Association of Women Geoscientists Breakfast**  
 Hilton's Lanier Grand Ballroom D, Houston, TX  
 Monday, October 6, 2008 6:30-8:30 am

\*\*This is a ticketed event\*\* \$25 for professionals, \$15 for students  
 Tickets are purchased with your meeting registration or contact [gsaservice@geosociety.org](mailto:gsaservice@geosociety.org) with questions

**Volunteer at the AWSS Booth and  
 Receive a Free T-shirt!**

Members who volunteer at least four hours at the AWSS booth during the 2008 ASA/CSSA/SSSA/GSA meetings will receive a FREE AWSS t-shirt!

**Booth 1650**

Stop by the booth and say hello!  
 We have new t-shirt designs and reusable grocery bags!



American Society of Agronomy - Crop Science Society of America - Soil Science Society of America



## ASA Meeting Reminders

Sept 5th—Last Day to Sign up for Child Care (<https://www.acsmeetings.org/registrations/child-care/>)

Sept 8th—Last day to sign up for Soils Exam and Prep Course (<https://www.soils.org/csse/>)

**Student Volunteer Sign-Up Now Available** (<https://www.acsmeetings.org/students/volunteer-and-intern/>)

\*\*FREE registration after volunteering 10 hours

\*\*\$25 stipend for every 5 hours volunteered

## 2008 AWSS Member Presentations/Posters

Name	Presentation Numbers	Name	Presentation Numbers
Teri Balser	527-1, 744-3, 699-1, 562-11	Lorene Lynn	699-25
Asmeret Berhe	746-13	Dena Marshall	590-2
Jennifer Berman	273-8, 273-9	Sajeemas Pasakdee	607-5
Christine Bliss	698-18, 688-3	Dawn Pettinelli	751-4
Julie Bower	592-5	Soni Pradhanang	787-2
Lynette Brown	802-4	Deann Presley	752-3, 705-1
Mary Ann Bruns	669-9, 57-5	Nithya Rajan	703-77, 779-2
Julia Burger	598-1, 763-1, 597-2	Thilini Ranatunga	580-9, 580-11, 708-4
Patricia Elias	598-1	Mary Schuh	778-2
Alice Enochs	585-5, 601-1	Kari Sever	610-1
Margie Faber	326-6	Diane Stott	68-9
Cinzia Fissore	70-5	Rebecca Tirado-Corbala	592-4, 740-13
Ann Marie Fortuna	745-8, 681-5	Karen Vaughan	589-1
Ymene Fouli	680-6	Rufina Ward	718-3, 629-3, 629-4
Sherry Fulk-Bringham	616-3	Ray Weil	282-11, 710-3
John Galbraith	216-1, 699-21, 69-3	Amanda Williams	595-4
Sabine Goldberg	742-8	Tanja Williamson	595-14
Wendy Greenberg	531-6, 531-7	Ruth Yanai	766-4, 685-7, 609-1
Karen Grubb	776-2		
Meagan Hynes	689-2		

I apologize for any mistakes or accidental deletions. I included all posters/presentations for which members were co-authors.

## S-5 Meeting Reminders

Dear Pedologists and Friends:

There are several special events to keep in mind this year. <https://www.acsmeetings.org/2008/> is the official web site for the meetings.

**1) Sponsored and Co-sponsored Tours -** <https://www.acsmeetings.org/programs/field-trips-and-tours/field/>

**A) Sponsored Pre-meeting soils/geology tour -**

407. Characterization and Interpretation of Soils and Geologic Formations with Carbonates, Gypsum, and Other Soluble Salts. Thurs.-Sun., 2-5 Oct. *Cosponsored by S-5 (Pedology), S-9, and S-880 of Soil Science Society of America.* Wayne Hudnall, Texas Tech University, Lubbock, Tex., +1-806-742-4490. This trip begins and ends in Midland, Texas.

**B) Co-sponsored Pre-meeting tours -**

408. Examination of a Vertisol Climosequence across the Texas Coast Prairie and its Implications for Interpreting Vertic Paleosols in the Geologic Record. Fri.-Sat., 3-4 Oct.

415. The Origin of the Sandy Mantle and Mima Mounds of the East Texas Gulf Coastal Plain: Geomorphological, Pedological, and Geoarchaeological Perspectives. Sat., 4 Oct.

**2) Digital Soil Mapping Working Group -**

Introductory meeting for those interested in producing and interpreting digital maps. Monday, October 6: 12:00 to 1:00 PM.

George R. Brown Convention Center, 360F. Bring your lunch. *Cosponsored by SSSA Division of S-5 (Pedology) and GSA Geoinformatics Division.*

**3) Workshop -** <https://www.acsmeetings.org/programs/short-courses/>

508. The WRB (World Reference Base for Soil Resources)--An International Soil Classification System. Sun., 5 Oct., 8:30 am-12:30 pm *Cosponsored by S-5 (Pedology) Division of SSSA.* Peter Schad, Technische Univ. München; Erika Micheli, Szent Istvan Univ. Limit: 50. Fee: US\$170. CEU: 0.4. WRB is an international soil classification system officially used by the International Union of Soil Sciences for communication between soil scientists all over the world. The workshop will discuss the principles, the architecture, and the rules for classification. The 32 Reference Soil Groups comprising the first hierarchical level will be introduced, and the second level (qualifier level) will be explained. Benchmark soils from the United States and other countries will be used as training examples and to show correlation possibilities between WRB and soil taxonomy. The target audience includes university teachers who want to include WRB in their curriculum, other professionals, and graduate students.

**4) Business meeting—677 Div. S05 (Pedology) Business Meeting.** Tuesday, October 7: 3:45 to 4:45 PM George R. Brown Convention Center, 361AB.

**5) All S-5 sponsored/co-sponsored SSSA technical sessions:** <http://a-c-s.confex.com/crops/2008am/webprogram/S5.html>

**6) Pardee Keynote Session—Monday, October 6, 1:30 PM-5:30 PM.** George R. Brown Convention Center, General Assembly Theater Hall A. 205 P2. Critical Zone Studies of Soils and Weathering: Implications for Interpreting Climate and Landscapes of the Past (GSA Sedimentary Geology Division; S05 Pedology; GSA Quaternary Geology and Geomorphology Division; Society for Sedimentary Geology (SEPM)). Steven G. Driese and Lee C. Nordt

**7) Our Two Symposia (plus other Joint Sessions)** <http://a-c-s.confex.com/crops/2008am/webprogram/Session5108.html>

**A) Monday, October 6, George R. Brown Convention Center, 332AD, 8:00 AM-12:00 PM** 52 J4. Characterization and Interpretation of Soils and Geologic Formations with Carbonates, Gypsum, and Other Soluble Salts (GSA Quaternary Geology and Geomorphology Division; S05 Pedology; S09 Soil Mineralogy; Mineralogical Society of America) Wayne Hudnall and Thomas Reinsch.

**B) Tuesday, October 7, George R. Brown Convention Center, Exhibit Hall E, 8:00 AM-6:00 PM** 65 J7. Digital Detection, Interpretation, and Mapping of Soil, Sediments and Bedrock (Posters) (GSA Geoinformatics Division; S05 Pedology; S09 Soil Mineralogy) John M. Galbraith and Jon Hempel.

**C) Search for Pedology, S5, S05, S05 and S-5** to find about 18 other joint sessions that we co-sponsor.

**8) Post-meeting tour -**

429. Soils and Geomorphology of the Texas Gulf Coastal Plain and Texas Shoreline with Special Emphasis on Hydrology, and Coastal Erosion. Thurs.-Sat., 9-11 Oct. *Cosponsored by SSSA Division of S-5 (Pedology); SSSA S880 Soils-Geomorphology Committee; GSA Quaternary Geology and Geomorphology Division.* C.T. Hallmark, Texas A&M, College Station, Tex., 1-979-845-4678; Susan Casby-Horton, USDA/NRCS, Temple, TX

## S-5 Meeting Reminders, continued

Dear Pedologists and Mineralogists and Friends:

Please set aside time for this event, **then RSVP to me by Sept. 15** to let us get a head count for ordering meals. Let us know if you request a vegan or gluten-free or lactose-free selection. The event is called the S-5/S-9 Planning Retreat. It will be held on Sunday, Oct. 5th, 4 till 8PM in the Stratford and Berkshire Rooms of the Lancaster Hotel, 701 Texas St., Houston, TX 77002. (713) 228-9500.

This special event will feature an open-bar social from 4-6PM. From 5-6PM we will hear three fun presentations: Chien-Lu Ping will tell stories about changes in soils he has seen due to recent warming, and also tell fun stories about the challenges of sampling way "up over" (my excuses to the Aussies). Wendy Greenberg will tell about her experiences of teaching pedology/geography to students, and any funny challenges of being a female faculty in a formerly male-dominated field of study. Then Dena Marshall will entertain us with her stories about unusual or challenging experiences being a female NRCS field soil scientist.

After the speakers, we will have a buffet and then break up into business sessions. The sessions should cover the symposia recommended for the 2009 Annual Meeting. S-5 members should also come prepared to discuss the idea of establishing some possible awards. Here are a few ideas:

1. OUTSTANDING GRADUATE STUDENT AWARD
2. OUTSTANDING UPCOMING SCHOLAR AWARD
3. OUTSTANDING PEDOLOGY TEACHER AWARD
4. OUTSTANDING PEDOLOGY SERVICE AWARD
5. OUTSTANDING PEDOLOGY RESEARCH AWARD
6. OUTSTANDING PEDOLOGY CONSULTANT AWARD

Sincerely,

Dr. John M. Galbraith  
239 Smyth Hall (0404)  
Blacksburg, VA 24061

---



---

## New Arrivals to the World of Soil Science

Several of our members have been busy ensuring the next generation of pedologists. Joanne Mosher, Genny Helt, and Zach Rigg have all welcomed new arrivals in the past few months. I'm especially happy due to the fact that the future of women soil scientists will continue to thrive, since all the new little ones turned out to be girls!

~Dena Marshall

Left: Genny brought Hannah Catherine into the world on June 5, 2008.

Right: Joanne and big brothers, Levi and Caleb welcomed Gracey on December 27, 2007.



## A Note from the Chair—Jamie Patton

Summer is quickly slipping through our fingers... For those of us in academia, school is back in session and a new crop of eager, young faces fill our classes. I am in my sixth year of teaching at a small, non-land grant university. Over the years, I have found each new academic year brings both hope and disappointment. Hope comes with each look of excitement when I have "sold" students on the idea that studying soils is really worth an ENTIRE semester of coursework. The disappointment always lies in the number of women entering our field of study. This year to my (and my male students') glee, I have TWO female agronomy majors, two women who decided to focus their studies on soils and plants. Which, if you were wondering, is up from zero female agronomy students last year (and the year before....and possibly the year before that). Two women out of a total of 200 female agriculture majors studying soils; a sad, but real fact.

We continue to struggle with drawing women into our profession. Why? What about the soil sciences seems so unappealing? Is it the number of science courses in the major? Is it the lack of female role models? Is it a lack of knowledge about who we are and what we do? A complex set of questions, with no good answers. When I think of recruiting women into our profession, I always imagine the picture of Dena in the soil pit with the little girl with a pink headdress. Recruitment efforts have always focused on gaining students at the high school and college level. Is it possible this is simply just too late; new recruits need to be "hooked" in elementary school? With age (and middle school/high school) comes a sense of self-consciousness and worries of what others think. There is pressure to conform and fit in. Young minds in primary school don't typically worry about the "ickiness" of dirt or if others think it's cool. Soil is simply fun. Natural curiosity draws kids into the complex world of soil because the same substance is full of creepy crawlies, is slick and slimy, as well as versatile enough to make bowls, mud pies, and snakes with just a little water. With so many possibilities, what kid wouldn't love the soil?



Hopefully with efforts such as the 'Dig It' exhibit and the new SSSA book *Soil! Get the Inside Scoop*, a new group of students, young and old alike, will begin to share our passion for the world beneath our feet. It would be great to look back in five years and see my two female students as the low point for female enrollment in the major. Realistically, I know the numbers won't grow by leaps and bounds and won't change quickly in the next five or ten years, but there is always hope. A gal can always hope...

On to the ASA/CSSA/SSSA/GSA meeting...

Unfortunately, I am unable to attend the meetings this year. Dena, Wendy and Kelli will be in Houston and are excited about meeting and talking with all of you at the mixer and AWSS booth!

Wendy has worked hard to organize the mixer and I am sure will have great snacks on hand for munching! I encourage you all to take advantage of the great networking and socializing opportunities at the event, as the Association of Women Geoscientists have expressed great interest in getting to know our members better.

Dena has graciously volunteered to wrangle the t-shirts and ensure their safe arrival to Houston. Selling t-shirts is our primary fundraising event and its success guarantees our ability to award our student travel scholarship each year. As a volunteer organization, we need your help in manning the booth during the meetings. This year, we are giving a free AWSS t-shirt to anyone who volunteers a total of four hours at the booth. You would be amazed how fast four hours goes when you are meeting new people enthusiastic about plants, soils or being in the US for the first time!

Kelli has done an amazing job of ensuring all the paperwork was completed to arrange for our booth and meeting room, as well as arrange for advertisements and promotions. I don't know what our organization would do without her!

I extend my deepest gratitude to these ladies for stepping up and getting the job done. They have ensured AWSS will be represented professionally and enthusiastically in Houston.

I would also like to thank GayLynn, Ray, and Yvonne for writing articles and sending pictures for this newsletter! Their insights into the Smithsonian exhibit give us that have not been there yet, a feel for the grandeur and wonder of the displays and events. Without volunteered articles, you get to hear my ramblings and see my pictures. Which, as you know, are just not that exciting. :)

Thank you again everyone and have a great time in Houston!

Jamie

## Reflections on Smithsonian Soils Exhibit Opening ~ GayLynn Kinter

July 19th was the opening of "DIG IT" The Secrets of Soil in the Smithsonian Museum of Natural History. On July 17, 2008, two days before the official opening, I had the fortune of attending an invitation only reception for those individuals that have worked on promoting and funding "DIG IT". I have served as the Michigan State Liaison for the past several years and appreciate all the support that has been given to this incredible production.

"DIG IT" has been in the works for eight years when two soil scientists unbeknown to each other contacted the Smithsonian about the importance of a SOILS exhibit. Over the years with many local, State and Federal, organizations along with universities, private companies, non-profit organizations, and individuals on board, this dream was brought to fruition. The goal was to raise \$3,000,000. Each state was responsible for securing \$10,000.00 in funds to have their state Monolith (ours being Kalkaska Sand) proudly displayed as part of the exhibit. If you contributed a specific amount, you were able to get your name on the brass plaque in front of the profile. Michigan's include Lee Jacobs, Farm Bureau, Kirk Lawton, MI chapter of SWCS, Soil Classifiers, myself and Tom Williams. I told my son, who accompanied me, that is where his inheritance went. I had asked my son to go, as we were allowed one guest. My oldest, Brandon, has always been involved in environmental and conservation concerns. He was an Earth Team volunteer, participated in Envirothon for 3 years as a student and volunteered three other years. He is an environmental and civil engineer doing remediation work and enjoyed talking to several consultants while we were at the reception.



As we were standing around the Michigan Monolith taking pictures and talking with other soil scientist, I heard a familiar voice and turned around and there was Tom Williams. It has been years since I had seen him and it was fun catching up on what is happening with everyone. He and his fiancée were camping outside of DC and came on the trip to be a part of the celebration.

The reception was by invitation only and guards were turning people away as we waited to enter. There were approximately 500 people that attended, each one having played an integral part in making this happen. I was able to talk with many of the retired national soil scientists, the Director of the Forest Soils Division, fellow soil scientists, conservationists, university professors, company owners and Dana York, NRCS Associate Chief. It was quite the production...



Above: GayLynn and Tom Williams, retired MDA Soil Scientist

The exhibit includes large photos with very interesting quotes about soils. Some that left an impression were "When you throw dirt, you loose ground" Texas Proverb or Dennis the Menace "Dirt is more fun when you add water to it". There are hands-on activities, making the visitor think about the importance of soils and how they effect their every day lives. There is a movie SSI, Soil Science Investigation, where they use the soils information to solve where the crime took place. You can make a soil monolith, see how the different particle sizes effect drainage, building sites, and production. They had a Chef's challenge where two soil chefs created different soils from the same ingredients.

Continued on the next page...

Friday there was a reception held at the Whitten Building, across from the NRCS National office. The presenters at the USDA reception were NRCS Chief Arlen Lancaster, SSSA President Dr. Gary Peterson, Gary Mast, USDA Deputy Under Secretary for Natural Resources and Environment representing Secretary Ed Shafer, John Redding, president of the National Association of Conservation Districts (NACD), a Smithsonian Museum representative, and the president of The Fertilizer Institute, a major exhibit sponsor. It was a memorable experience to be able to meet with these individuals and hear their praise for this exhibit. Henry Ferguson, NRCS soil scientist, provided hands-on demonstrations. We made soil monoliths portraying the District of Columbia's soil and met Sammie Soil (This costume was worn by several individuals because I was told it gets very HOT inside.). Laura Craven, past treasurer of AWSS, was there also. I met Diane Shields from MD.

The exhibition will be at the Smithsonian until January 2010, when it will go on the road. The Smithsonian is looking for exhibit areas with at least 5,000 square feet of space and they are targeting larger cities across the country. You can get a preview of this exhibit and information pertaining to it if you visit <https://www.soils.org/smithsonian/> and <http://forces.si.edu/soils/>.

While this was an expensive trip, it was some of the best money and personal time I have ever spent. I hope that each of you will make the effort to visit this exhibit and support this vital resource. A resource that is so important to our lives, our profession, our livelihood and our future.

As always in dirt,

GayLynn Kinter, Area Resource Soil Scientist, ARCPACS



Long time AWSS member Ray Weil was among about a dozen volunteers on the opening day (Saturday July 19). He answered questions and helped kids make mini soil profiles from local A, B and C horizon material on their way out of the exhibit. Each child could take home their profile as a souvenir and a little piece of Washington DC itself. He volunteered from 10 AM to 2 PM and there was a continuous stream of visitors from all over the country and the world. Everyone seemed to be having a good time learning about soils and the parents were just as involved as the kids. During the construction of the exhibit, Ray had worked closely with the Smithsonian curators to make the exhibit as realistic and accurate as possible,

## Reflections on Smithsonian Soils Exhibit Opening ~ Yvonne Lawley

After touring the new soil's exhibit at the Smithsonian Natural History museum in August, I was impressed by the beautiful and creative way that the exhibit takes the complexities of what I study as a soil scientist and make it relevant and accessible to a broad audience. That being said, what really grabbed my attention about the exhibit was watching the people in the museum react and interact with the exhibit. It was clear to me that many people were connecting to this exhibit in a personal way from talking about their own encounters and experiences with soil to their companions, to searching out their state soil amongst all the monoliths on display, or by taking the time to ask questions about live demonstrations in the exhibit. As someone who wishes that more people had a greater understanding of the importance of soil in our lives, it was encouraging to see so many - both young and old - spending their time in this exhibit and to watch them reaching out to interact and explore it in their own way.

Yvonne Lawley  
PhD Candidate  
Department of Environmental Science and Technology  
University of Maryland  
College Park, MD



Above: Group from the University of Maryland and the University of Hamburg visited the soils exhibit Friday, August 8, 2009



Above right: Soil monoliths from each state were a draw as people looked for their "home earth"



Right: Iron Chef for soils - one of the most popular exhibits that describes how to make soils using different "ingredients" like water, moisture, and time



Left: Nematodes are front and center!



Right: Interactive displays make the exhibit interesting for kids



Left: Carts with soil demonstrations drew a lot of attention. This one compared water retention and runoff between well aggregated soils, soils managed under no-till, and a poorly aggregated soil with a history of tillage.



# Hodge Podge



## No Child Left Inside

Earth Science Week, October 12-18, 2008

<http://www.earthsciweek.org/>



## Our Good Earth— The future rests on the soil beneath our feet

Published in National Geographic, September 2008

<http://ngm.nationalgeographic.com/2008/09/soil/mann-text>

## Via Email...Afghan Soil Test

Jamie,

I figured you would like to see this print out of a typical soil test over here. High pH for sure, severe lack of organic matter. Some of the most pathetic "good soils" I have ever seen.

Sgt Kyle P. Dignan

دنگرهار ولایت د شیشم باغ دکرنی خیرنیز مرکز  
د خاوری پیژندنې څانګه  
نېټه / 13 / 6 / 1386

د خاوری طبقه بندي	د خاوری Texture			عناصر		E C mmhos/cm	CaCO <sub>3</sub> %	د خاوری pH	د نمونې نمبر	پته		دهقان نوم
	Clay %	Silt %	Sandy %	P- ppm	K-ppm					وېشوالی پته	وېشوالی پته	
Clay loam	29,6	43,2	27,2	185	268,22	0,144	30	7,69	1	پل علم	لوگر	هدایت الله
Silt clay loam	35,6	58	2,4	30,6	190,41	0,139	22,75	7,40	2	برکي برک	لوگر	نظير احمد
Clay loam	30,4	44,42	25,2	104	804,07	0,683	30,75	7,35	3	برکي برک	لوگر	ملا محمد داود
Silt clay loam	30,8	58	11,2	55	330,33	0,141	6,25	8,24	4	برکي برک	لوگر	داکتر اسماعیل
Silt clay loam	34,4	57,6	6	63,64	321	0,171	12	8,32	5	برکي برک	لوگر	عبدالرزاق
Loam	18,4	52,4	29,2	55,09	308,94	0,115	1,75	8,38	6	پل علم	لوگر	رفيع الله
Silt clay loam	33,6	56	10,4	53,85	335,10	0,144	16,75	8,41	7	پل علم	لوگر	شیرحمید
Silt clay loam	30,4	61,2	8,4	26,92	166,75	0,093	13,75	8,39	8	برکي برک	لوگر	حاجي سلام خان
Clay loam	22,4	37,2	40,4	24,48	156,06	0,098	21,25	8,33	9	پل علم	لوگر	احمد ه الله
Silt clay loam	30,4	59,2	10,4	36,72	257,98	0,189	15	8,16	10	برکي برک	لوگر	صاحب الدين

سپارښتنه: د خاوری پورتنی نمونو د تجزی څخه معلومېږي چه نوموړي خاوری د نسبتا مناسب (پي آچ) ...

## ISCA/WSPSS/AWSS Joint Fall Field Trip October 15<sup>th</sup> & 16<sup>th</sup>, 2008

**Location:** Illinois Beach Resort and Conference Center, Spring Bluff Forest Preserve, and Lyons Woods Forest Preserve on the boundary of Wisconsin, Illinois and the shore of Lake Michigan, near the towns of Zion and Winthrop Harbor in Lake County, Illinois

### **Agenda**

**Wednesday, Oct 15** – Illinois Beach Resort and Conference Center, Conference Room

**6:00-7:00 pm** – Registration

**7:00-8:30 pm** – Presentations by:

Jim Miner, Geologist with Illinois State Geological Survey, will discuss the geologic history of post-glacial Lake Chicago, the Zion City moraine and his study of the water table at Spring Bluff.

Don Wilson, Illinois Beach State Park Steward will discuss the natural resources and human impact of the area.

President (or representative) from each professional organization

**8:30-? pm** – Social time to interact with our fellow soil scientists

**Thursday, Oct 16** – Field Tour

**8:00 am-1:00 pm** – Meet at Spring Bluff Forest Preserve to see soils formed in the ridge and swale deposits of post-glacial Lake Chicago. After a mid-morning break (refreshment provided) test your texturing skills (with prizes for the winners!). Travel by car only a short distance to Lyons Woods Forest Preserve to view till soils of the Zion City moraine.

**1:00 pm** – Farewell

**Registration:** Please register by September 15<sup>th</sup>. Registration fee is \$15.00 payable to Illinois Soil Classifiers Association. Late registration after September 15<sup>th</sup> or at the door is \$20.00.

**Lodging Information:** You are responsible for making your own lodging arrangements. A block of 20 rooms has been reserved at the Illinois Beach Resort and Conference Center at the rate of \$89 + tax. <http://www.ilresorts.com>. Call the resort at (847) 625-7300 before September 15<sup>th</sup> to guarantee a room. Camping facilities are available in the state park. For information about camping go to: <http://dnr.state.il.us/LANDS/LANDMGT/PARKS/R2/ILBEACH.HTM>. Other motels are in nearby Zion and Winthrop Harbor. For more information about other places to stay, go to: [http://travel.yahoo.com/p-hotel-4128764-illinois\\_beach\\_resort\\_conference\\_ctr-i](http://travel.yahoo.com/p-hotel-4128764-illinois_beach_resort_conference_ctr-i). If you would you like to share a hotel room to cut costs and you don't already have a roommate, let us know and we will compile and distribute a list by September 20<sup>th</sup> to people on that list only. Maybe you will know someone, maybe not, but it is one night and can save you a few bucks. Mark "Yes" on the registration form if interested.

For more information please contact [Mark.Bramstedt@il.usda.gov](mailto:Mark.Bramstedt@il.usda.gov), (815) 432-3946 x113 or (815) 432-2378, evenings.

### Registration Form for October 15 & 16, 2008 ISCA/WSPSS/AWSS Fall Tour

**Registration :** \$15.00 (\$20.00 if after September 15<sup>th</sup>)

Name: \_\_\_\_\_ Affiliation: \_\_\_\_\_

Address: \_\_\_\_\_

City: \_\_\_\_\_ State: \_\_\_\_\_ Zip: \_\_\_\_\_

Phone: (\_\_\_\_) \_\_\_\_\_ Email address: \_\_\_\_\_

Would you like a list of attendees to share a room? Yes \_\_\_\_\_

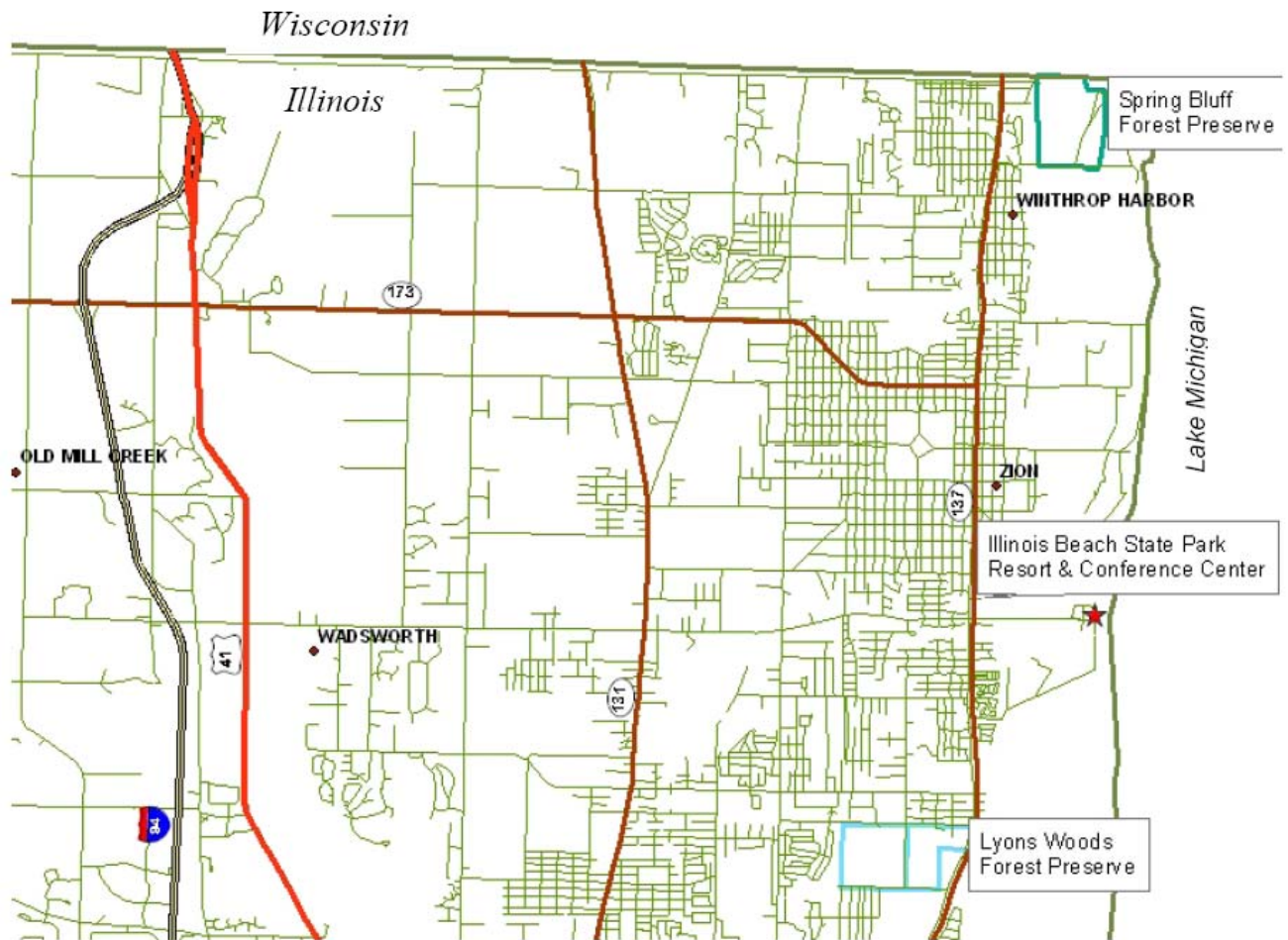
If you are interested in an optional commemorative T-shirt for \$10.00 (earth-tone color with all 3 logos on left chest area), please register before September 15<sup>th</sup> and indicate size and quantity. XS \_\_\_ S \_\_\_ M \_\_\_ L \_\_\_ XL \_\_\_ XXL \_\_\_ XXXL \_\_\_ XXXXL \_\_\_ (adult sizes)

Please make the check for \$15 dollars (\$20.00 after September 15<sup>th</sup>). If ordering the commemorative t-shirt, add \$10.00. Make your check payable to Illinois Soil Classifiers Association. Detach and send the registration form and check to:

Mark Bramstedt, 320 E Locust St., Watseka, IL 60970



## ISCA/WSPSS/AWSS Joint Meeting October 15-16, 2008



Not to scale.



## 2009 National Collegiate Soil Judging Contest

Missouri State University will host the next National Collegiate Soil Judging contest, March 29 - April 3, 2009, in Springfield, Missouri.



For more information, contact Harry James, coordinator for the 2009 National Collegiate Soil Judging Contest at

[harryjames@missouristate.edu](mailto:harryjames@missouristate.edu)



# Birth of a Gully...



Heavy snow fall and torrential rains this winter/spring in south-central Iowa set this field up for disaster. According to the agronomist who sent me these pictures, this field had little to no sign of rill/gully erosion prior to the consecutive rain events that lead to the initiation and expansion of this gully. Unfortunately, this was not an isolated event in this part of the world this spring...



## Association of Women Soil Scientists Membership Form



Clip or photocopy. Required items are marked with an asterisk (\*).

\* Dues:  Professional=\$15/year  Student=\$10/year.

Membership is on a calendar year basis and includes three newsletters and access to the online directory of members. New members may join at any time during the year and will receive all three issues of the newsletter. Renewals are due the first business day of January. You may contribute to the AWSS scholarship fund when you pay your dues. Just designate amounts on the memo line of your check.

\* Please check all that apply:  New Member  Renewal  Address Change  Volunteer

\* Name: \_\_\_\_\_

E-mail: \_\_\_\_\_

\* Address: \_\_\_\_\_

\_\_\_\_\_

Phone (Work and/or Fax and/or Home): \_\_\_\_\_

Current Position: \_\_\_\_\_

Advisor's signature (\* to verify student status for student members): \_\_\_\_\_

\* List me in the AWSS Member Directory:  yes  no.

Note: The directory will be available online to **AWSS members only** by the second quarter of 2004. It will be secure, password-protected, and SSL encrypted. Each member will have a unique login ID and password.

**I would like to volunteer (check all that apply):**

Committee:  Membership  Mentoring  Scholarship  T-Shirt

Newsletter:  Write a profile  Write a newsletter article

Completed membership forms and checks (payable to AWSS) can be mailed to:  
Kelly Counts, .O. Box 578, Maple Valley, WA 98038-0578  
Questions? E-mail Kelly at [kelly.counts@yahoo.com](mailto:kelly.counts@yahoo.com)



The Association of Women Soil Scientists (AWSS) is a 501(c)(6) nonprofit organization of **women and men** in soil science who support these goals:

- To establish and maintain high standards for professional women soil scientists;
- To promote and enhance communication among professional soil scientists;
- To promote a dialogue of soil information and to encourage an interchange with other technical and scientific communities;
- To promote better understanding of the role of soil scientists;
- To provide assistance and encouragement for women in non-traditional fields and for women seeking employment in the field of soil science.



## AWSS Executive Committee

### Officers

**Jamie Patton, Chair**  
 Northwest Missouri State University  
 Maryville, MO 64468  
 (W) 660-562-1659  
 (Fax) 660-562-1621  
[jamiejp@nwmissouri.edu](mailto:jamiejp@nwmissouri.edu)

**Dena Marshall, Past Chair**  
 USDA-NRCS Soil Survey  
 2600 N State Highway 7  
 North Vernon, IN 47265  
 (W) 812-346-3411 ext. 5  
 (Fax) 812-346-4237  
[dena\\_marshall@in.usda.gov](mailto:dena_marshall@in.usda.gov)

**Wendy Greenberg, Chair Elect**  
[bassoons@paulbuyan.net](mailto:bassoons@paulbuyan.net)

**Kelly Counts, Secretary/Treasurer**  
 P.O. Box 578  
 Maple Valley, WA 98038-0578  
 (H) 206-962-9674  
[kelly\\_counts@yahoo.com](mailto:kelly_counts@yahoo.com)

### At-Large Members

**Sarah Uttech**  
 SSSA-ASA Contact  
 Program Manager, Communications  
 677 South Segoe Road  
 Madison, WI 53711  
 (W) 608-268-4948  
[suttech@agronomy.org](mailto:suttech@agronomy.org)

**Cheryl Simmons**  
 SWCS Representative  
 Central National Technology Support Center  
 P.O. Box 6567  
 Fort Worth, TX 76115  
 (W) 817-509-3314  
 (Fax) 817-509-3337  
[cheryl\\_simmons@ftw.usda.gov](mailto:cheryl_simmons@ftw.usda.gov)

**Ann M. Mason**  
 Private Sector Representative  
 Strata Environmental  
 P.O. Box 1334  
 Lombard, IL 60515  
 (W)/(Fax) 630-627-9522  
[annmason@aol.com](mailto:annmason@aol.com)

### Additional Members

**Margie Faber**  
 Historian  
 331 Riley Mountain Road  
 Coventry, CT 06238  
 (H) 860-742-6770  
 (W) 860-871-4040  
 (Fax) 860-871-4054  
[margie.faber@ct.usda.gov](mailto:margie.faber@ct.usda.gov)

**Heather Dion**  
 ASA-Women in Agronomy Rep.  
 Nuclear Nonproliferation Division  
 Los Alamos National Laboratory  
 P.O. Box 1663  
 MS B230  
 Los Alamos, NM 87545  
[hdion@lanl.gov](mailto:hdion@lanl.gov)

**Genny Helt**  
 T-shirts  
 USDA-NRCS Soil Survey  
 2600 N State Highway 7  
 North Vernon, IN 47265  
 (W) 812-346-3411 ext. 5  
 (Fax) 812-346-4237  
[genny\\_helt@in.usda.gov](mailto:genny_helt@in.usda.gov)

*Encouraging and supporting women in soil science*